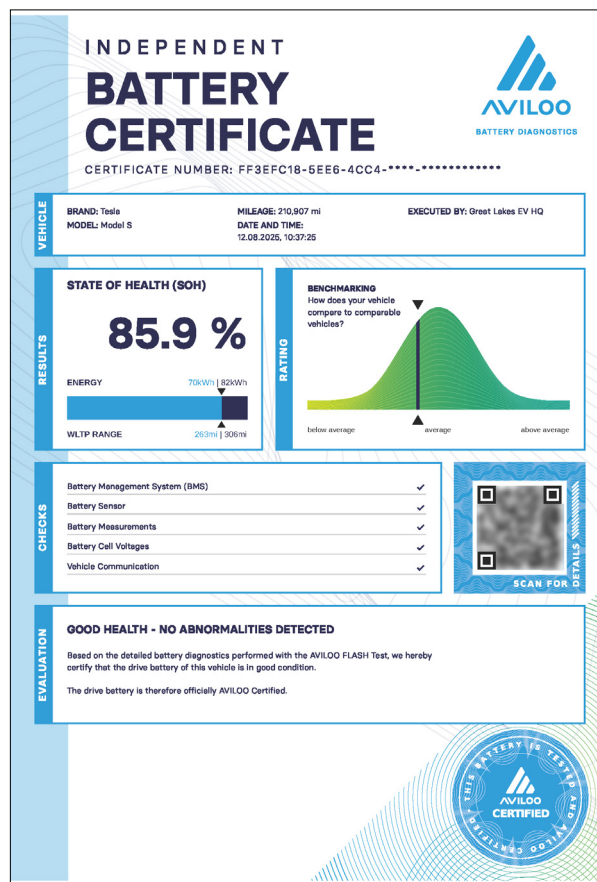


## WHAT DOES THE AVILOO FLASH TEST REPORT SAY? SAMPLE VIEW OF THE REPORT:



## Overview of the analyzed values

### INDEPENDENT VERIFICATION OF BATTERY CONDITION

The certificate confirms the State of Health (SoH) of the traction battery and ensures that it meets common safety standards. The SoH value is determined from real vehicle data using the certified AVILOO algorithm.

### BENCHMARKING FOR MARKET TRANSPARENCY

A comparison with similar electric vehicles allows for a well-founded assessment of battery performance. A visual scale shows whether the battery performs below average, average, or above average.

### DETAILED BATTERY ANALYSIS FOR SAFETY

The test checks battery management, sensor accuracy, voltage, and communication stability. The voltages of the battery pack and individual cells are analyzed to detect hidden defects at an early stage.

### RANGE VERIFICATION

The WLTp range is realistically estimated to provide a reliable forecast of actual driving performance.

## Advantages of the AVILOO FLASH Test in sales

### FASTER SALE

Many prospective buyers of used electric cars – especially first-time buyers – are unsure about the battery condition. This hurdle is slowing the market. An AVILOO FLASH Test Certificate builds trust and accelerates the purchase decision. Vehicles with an AVILOO Certificate sell **up to 36 % faster** – according to international market data

### HIGHER SALES PRICE

Certified used vehicles command higher prices: Buyers are willing to pay between **\$ 550 and \$ 1,100** more for cars that include an independent AVILOO Battery Certificate, compared to identical models without the certification.

### BUILDING EXPERTISE

Salespeople with AVILOO Certificates are considered knowledgeable in e-mobility. This strengthens the brand image and convinces tech-savvy customers.

### TRUST & CUSTOMER LOYALTY

An independent battery certification ensures transparency a crucial trust factor in the used car trade.

**81 % of buyers** find certifying dealers particularly trustworthy – this strengthens loyalty and resale opportunities.

\*The values shown here were not calculated by AVILOO but correspond to the values read out from the battery management system (BMS) and were calculated by the manufacturer. AVILOO therefore assumes no liability for their accuracy.

DISCLAIMER: The test result includes the currently calculated state of health (SoH) of the drive battery. The determination is based on data provided by the vehicle. These are evaluated by AVILOO's algorithm using statistical and analytical models. Manipulation of the data in the control unit leads to an incorrect result. The indicated SoH has a technically induced fluctuation range (deviation) of no more than 2% in at least 95% of reference measurements. It should be noted that this tolerance applies to the SoH determination at the cell level and not to the SoH of the entire battery. This is because the state of charge of individual cells may vary, which can negatively affect the current SoH of the battery. However, this can be compensated by the Battery Management System (BMS) during a calibration. The result of the test is the condition of the battery at the time of the test. No conclusion can be drawn about the future state of health of the battery from this. Statements about mechanical damage or external influences are not part of this diagnosis.

AVILOO Inc. | 4949 S Syracuse St Ste 550 | 80237 Denver, CO | United States | help.us@aviloo.com